

PRODUCT

Pump

LEO / 60Hz

LRP15-90A/160



Application

- It is widely used for heating ventilating and air conditioning (HVAC) circulation, pressure boosting of hot water in family, homes powered by solar energy, industrial auxiliary equipment cold and hot water circulation and so forth
- Water circulation for the central and district heating system
- Domestic hot water circulation

Pump

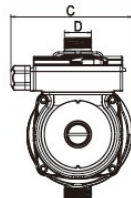
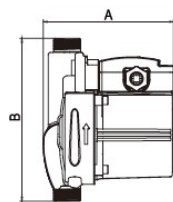
- Automatic pressure boosting
- Anti-rust cast iron pump body
- Noryl impeller with heat resistance up to 150°C
- 99% alumina ceramic shaft
- Liquid temperature: 2°C - 60°C

Motor

- Insulation class: H
- Protection class: IP42
- 99% alumina ceramic bearing
- Copper winding

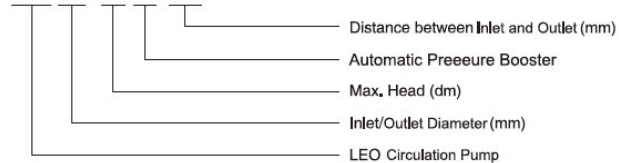
Show details

Dimension Drawing



Identification Codes

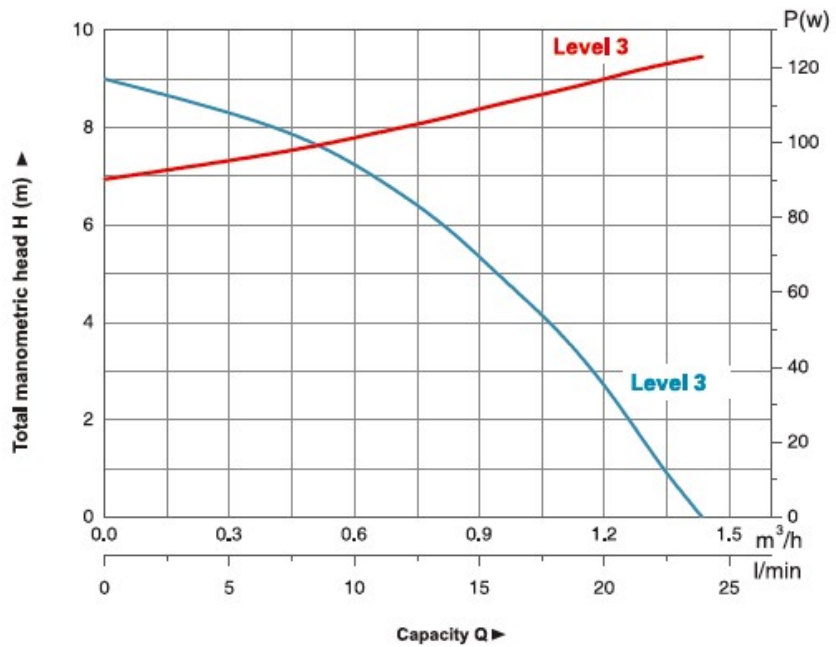
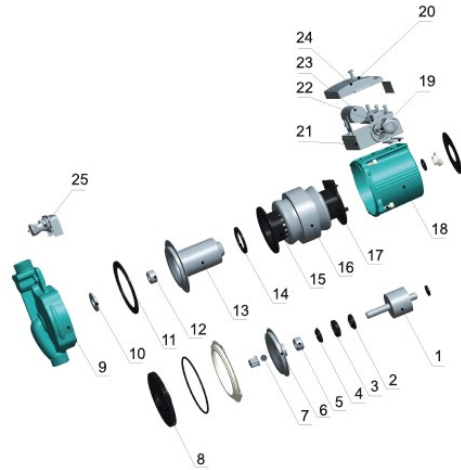
LRP 15 - 90 A / 160



MODEL	A (mm)	B (mm)	C (mm)	D
LRP15-90A/160	129	160	120	G ^{3/4}

Materials Table

No.	Part	Material
1	Rotor	
2	Thrust bearing adjusting mat	Noryl
3	Thrust bearing rubber mat	Silicon rubber
4	Thrust bearing	Graphite
5	Front bearing	Alumina
6	Pump support cover	Stainless steel
7	Check ball	Silicon rubber
8	Impeller	PPO
9	Pump body	Cast iron/bronze
10	Pump body insert	Stainless steel
11	Body gasket	
12	Back bearing	HT200
13	Can brg asm	Stainless steel
14	Can brg asm seal	Silicon rubber
15	Stator cover(front)	PA66
16	Motor stator with winding	
17	Stator cover(back)	PA66
18	Pump shell	ADC12
19	Cable outlet nut	ABS
20	Speed regulation button	ABS
21	Terminal cover	ABS
22	Capacitor	
23	Speed regulation board	
24	Terminal box	PC
25	Flow switch	



LRP15-90A/160

— Q-H
— Q-P